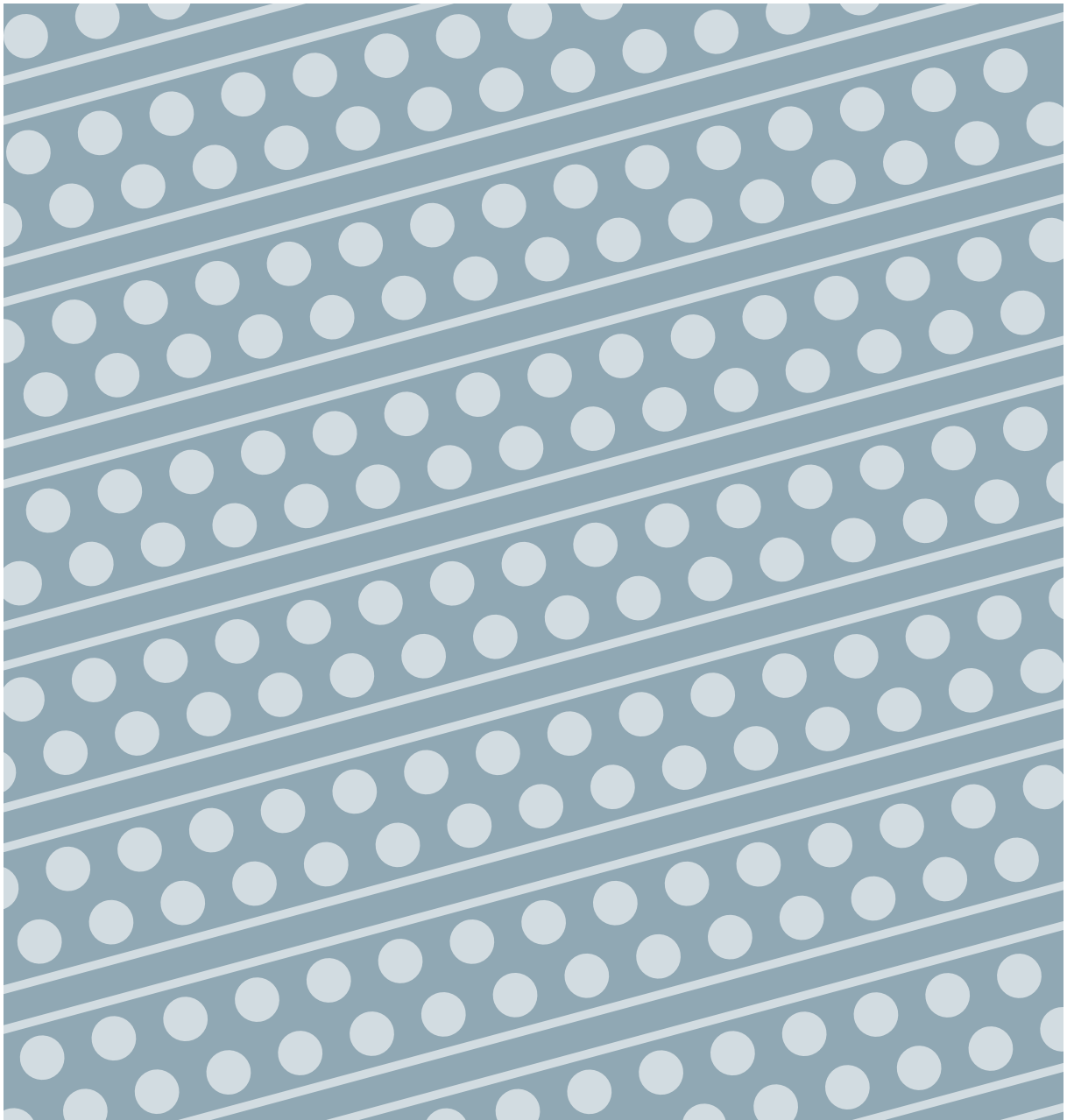


# CO-Extruded **multi perforated mulch films**





# About us

As the problem of inefficient food production is increasingly evident and the demand is increasing, solving this burning problem is crucial to the future of us all.

The vision of Gerovit is based on this idea. With direct contact with the producers, we constantly listen to their needs and problems in the processes of production, protection, and storage of food.

Our team is made up of people whose joint passion for solving this problem with expertise and experience, as well as the latest generation of equipment, guarantee an effective overcoming of every present and future problem.

With us, the future is safe.





# Company in details

The production facilities of the company are located in the city of Arandjelovac, SERBIA. We are a 100+ employees company with a production facility present in Serbia from where we cover markets of EU, Russia, North Africa, South Africa, and the Middle East with a tendency towards further growth of the market. We are focused on fast production and fast logistic.

In 2019 our company get certificated at TÜV SÜD for Quality Management System (QMS) ISO 9001:2015 environmental management system (EMS) ISO 14001:2015 and Occupational Health and Safety Management Systems (OHS) ISO 45001:2018

Using machines and tools from known manufacturers, such as Reifenhäuser, T.H.E. (Thomas Machines), Arburg, Macchi, Karl Mayer, NGR and others provides the latest processing technology.

For maximum satisfaction of customer needs, the Company is constantly innovating and improving personnel and equipment. Since the beginning, the Company introduced the SAP ERP modules MM, SD, PP, FI CO. World-renowned manufacturers and our suppliers, DOW, EXXONMOBIL, BASEL, SABIC, PLASTICA KRITIS, CABOT, MOL, UNIPETROL, VERSALIS, AMPACET, PETROHEMIJA, S-GROUP, and other guarantees that the raw materials that are used in the production process are of superior and reliable quality.

We are processing 6.000 Tones of PE material per year in a wide range of more than 300 products.

# CO-Extruded multi perforated mulch films



**Made from premium LDPE & LLDPE C6 & C8 metallocene materials provide you supreme mechanical properties on thin film extrusion, from 15 microns.**

Gerovit mulch foil is manufactured in accordance with SRPS EN 13655:2018. Based on special recipe material blends gives special mechanical properties.

Premium black masterbatch from Cabot makes the film opaque and high sun protection. We are supplied with well-known german machine producer Reifenhäuser 3-layer blown film line with integrated Gunter inline devices for perforating up to 5 holes per line which means up to 10 perforations on folded foils.



Mulch film is almost impermeable to gases. The CO<sub>2</sub> released from the soil due to the decomposition of organic substances is channeled to perforations on the film made for planting and becomes concentrated around each plant. This small increase in CO<sub>2</sub> level around the stomata of foliage promotes growth by enhancing photosynthesis.

It retains heat in the soil during the night and secures favorable microclimate conditions in the root zone which results in increased early and total yields of crops.

Mulch foils prevent evaporation and secure optimum moisture of the soil which leads to more effective use of available water. Drip irrigation combined with plastic mulch decreased the water consumption of row crops six times.

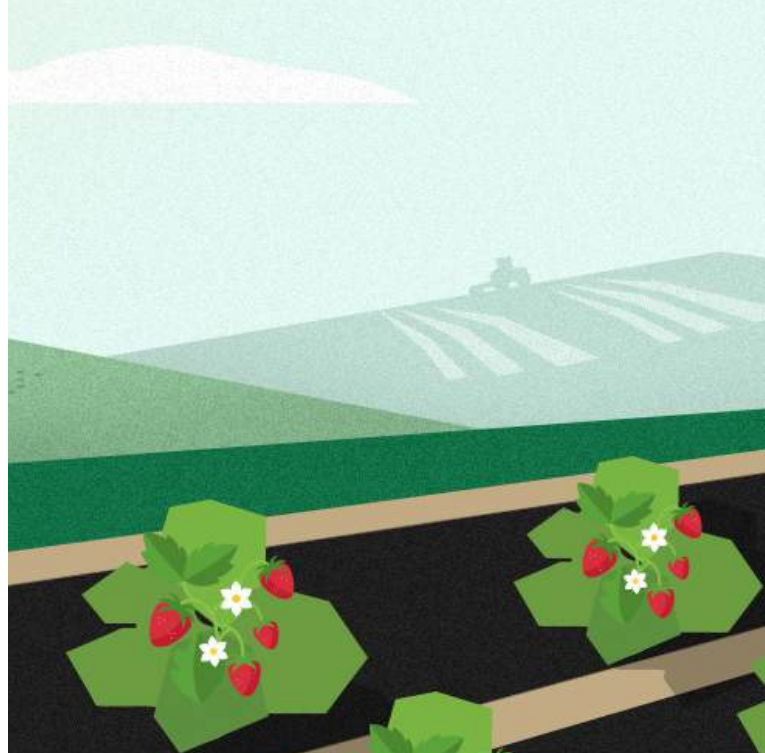
Higher humidity increases the number of dissolved nutrients dispersed in the root zone.

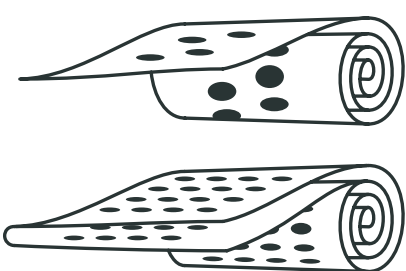
It prevents weed growth.

# Mulch film

## - Specification

Long-lasting Mulch Films increase crop production rates. Gerovit mulch foil is manufactured in accordance with SRPS EN 13655:2018. Based on special recipe blends give special mechanical properties.

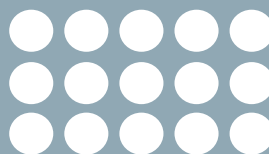


Film thickness	Film width	Material & Lifetime	Perforation	Perforation size	Packaging
<ul style="list-style-type: none"> <li>• from 15 up to 60 microns</li> <li>• black mulch from 15 microns</li> <li>• silver/black mulch from 15 microns</li> <li>• white/black mulch from 22 microns</li> <li>• fume and transparent mulch from 15 microns</li> </ul>	<p>Standard sizes</p> <ul style="list-style-type: none"> <li>- 800 mm</li> <li>- 1000 mm</li> <li>- 1200 mm</li> <li>- 1400 mm</li> <li>- 2000 mm</li> <li>- 2500 mm</li> <li>- 3000 mm</li> <li>- 3500 mm</li> </ul> <p>* It is possible to do any size from from 600 mm up to 5200 mm</p> <p>**All widths of foil larger than 2600 mm are delivered folded.</p>	<p>Enhanced Polyethylene Resins</p> <ul style="list-style-type: none"> <li>• LLDPE</li> <li>• LDPE</li> <li>• 6 months (low cost 15 mcrons mulch)</li> <li>• 1 season (15 microns mulch)</li> <li>• 1 year (20-25 microns)</li> <li>• 2 seasons (30 microns and more)</li> </ul>	<ul style="list-style-type: none"> <li>• no perforation</li> <li>• 1 line</li> <li>• 2 lines for strawberries</li> <li>• up to 8-10 lines for green salad wide mulch films</li> </ul> 	<ul style="list-style-type: none"> <li>• Ø50 mm</li> <li>• Ø65 mm</li> <li>• Ø80 mm</li> </ul>	<ul style="list-style-type: none"> <li>• 50 m and 100 m box package</li> <li>• everything over 500m on a roll</li> </ul>

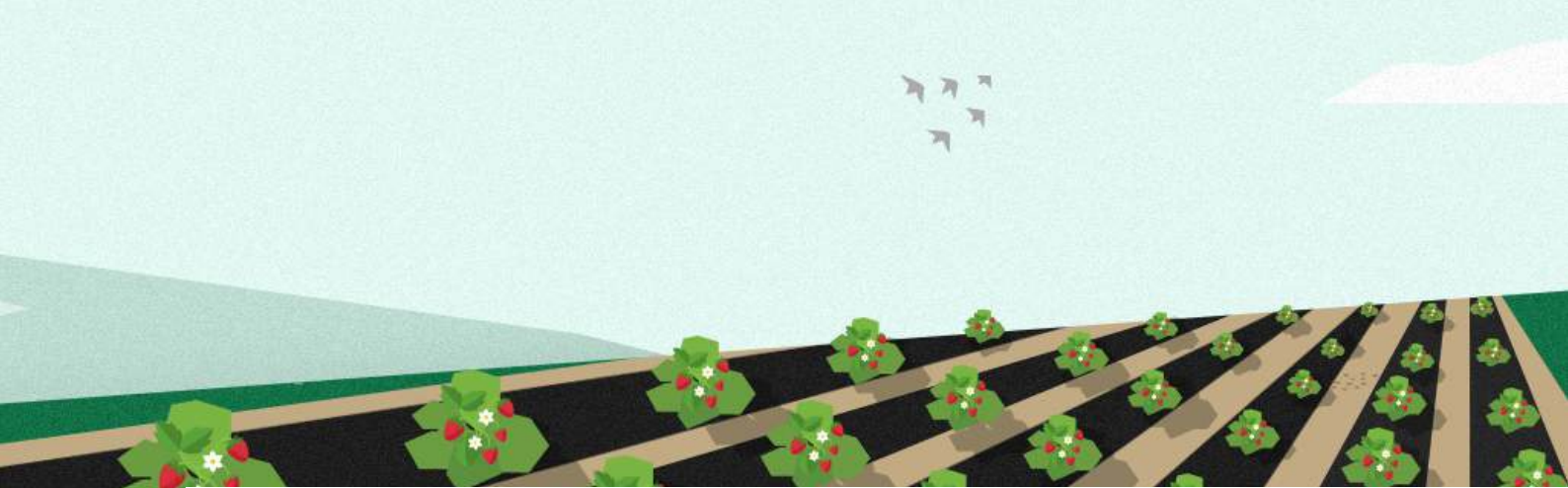
\*All widths of foil larger than 2600 mm are delivered folded.



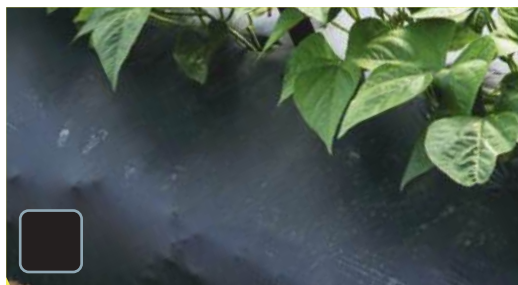
Integrated  
GRINDING DEVICE  
perforation in-line  
or zig-zag



Integrated  
GRINDING DEVICE  
Multiline perforation  
up to 10 holes in line



PURE BLACK



Black mulch foils disable the photosynthesis of weeds. You will reduce weeds without using herbicides with our mulch foils. Plants grow on a clean surface as it prevents the growth of weeds and limits the rise in soil temperature.

SILVER/BLACK



Black/silver mulch foil confuses and repels insects such as thrips, aphids, flea beetles, and whiteflies by reflecting UV rays and illuminating underneath the leaves that are normally in the shade. This mulch will help you to deal with insects without the use of insecticides.

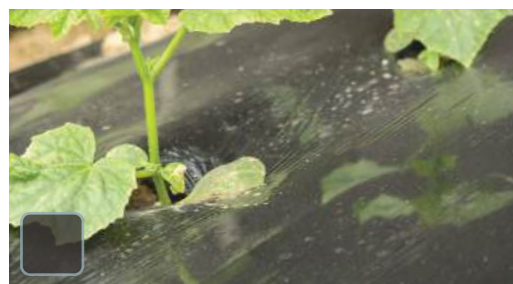
WHITE/BLACK



Black/white mulch film reflects scattered (diffused) light that promotes photosynthesis and plant growth which leads to earlier maturation and higher yields.

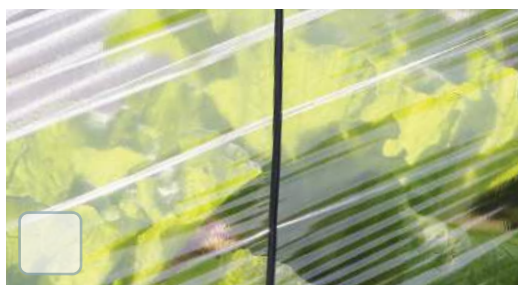
Reflective mulch foils less warm the soil underneath than black mulch foils.

FUME



Fume mulch films are preferred for the early production of special crops, especially watermelons. Its composition allows the heat to pass to the soil and prevent temperature loss during the night.

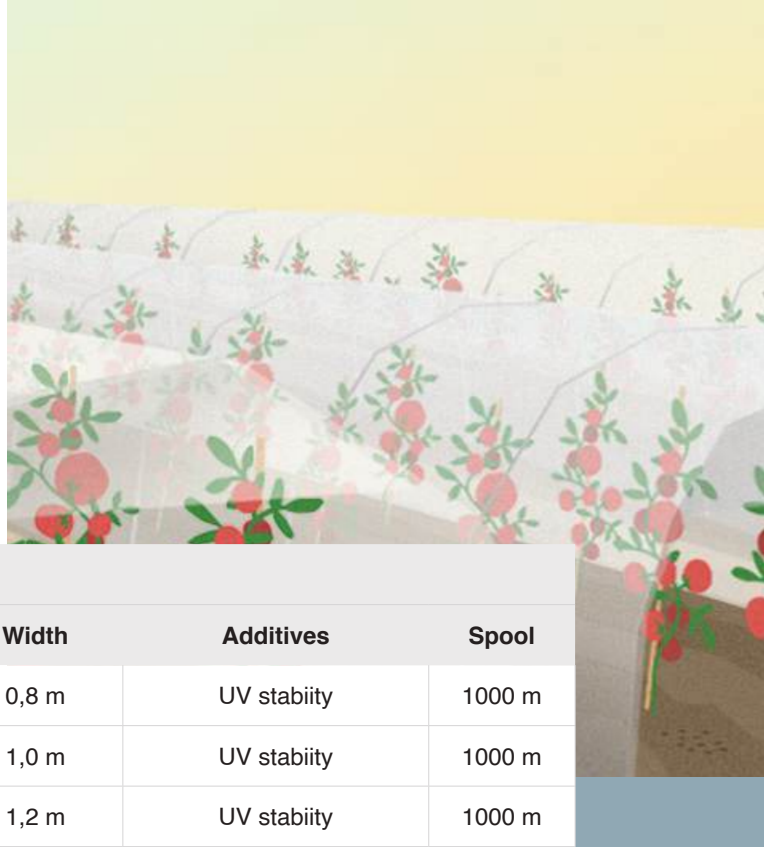
TRANSPARENT





Transparent mulch films disinfect the soil and prevent the growth of weeds by solarization (burning) when used during the summer period. Sometimes it is used to encourage early-season plant growth and early cropping.

# Mulch films

## - Product range



 <b>Pure Black seasonal mulch film</b>					
Code	Color	Thickness	Width	Additives	Spool
ML11150810	black/black	15 mic	0,8 m	UV stabiity	1000 m
ML11151010	black/black	15 mic	1,0 m	UV stabiity	1000 m
ML11151210	black/black	15 mic	1,2 m	UV stabiity	1000 m
ML11200810	black/black	20 mic	0,8 m	UV stabiity	1000 m
ML11201010	black/black	20 mic	1,0 m	UV stabiity	1000 m
ML11201210	black/black	20 mic	1,2 m	UV stabiity	1000 m
 <b>Silver/Black seasonal mulch film</b>					
ML18150810	silver/black	15 mic	0,8 m	UV stabiity, Pigments	1000 m
ML18151010	silver/black	15 mic	1,0 m	UV stabiity, Pigments	1000 m
ML18151210	silver/black	15 mic	1,2 m	UV stabiity, Pigments	1000 m
ML18200810	silver/black	20 mic	0,8 m	UV stabiity, Pigments	1000 m
ML18201010	silver/black	20 mic	1,0 m	UV stabiity, Pigments	1000 m
ML18201210	silver/black	20 mic	1,2 m	UV stabiity, Pigments	1000 m
 <b>Fume seasonal mulch film</b>					
ML11150810	fume	15 mic	1,0 m	UV stabilnost	1000 m
ML11151010	fume	15 mic	1,2 m	UV stabilnost	1000 m
ML11151210	fume	15 mic	1,4 m	UV stabilnost	1000 m
 <b>Transparent seasonal mulch film</b>					
ML00150710	transparent	15 mic	0,7 m	UV, anti-dripping	1000 m
ML00150810	transparent	15 mic	0,8 m	UV, anti-dripping	1000 m
ML00151010	transparent	15 mic	1,0 m	UV, anti-dripping	1000 m
ML00151210	transparent	15 mic	1,2 m	UV, anti-dripping	1000 m
ML00151410	transparent	15 mic	1,4 m	UV, anti-dripping	1000 m

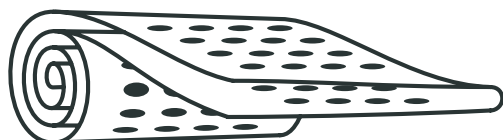




### Multiseasonal strawberry mulch film

Code	Color	Thickness	Width	Hole no.	Hole position	Hole size	Spool
ML11251213	black/black	25 mic	1,2 m	1 hole	20 cm	Ø65 mm	1000 m
ML11251314	black/black	25 mic	1,3 m	2 holes	20 cm	Ø65 mm	1000 m
ML11301011	black/black	30 mic	1,0 m	1 hole	20 cm	Ø50 mm	1000 m
ML11301012	black/black	30 mic	1,0 m	2 holes	30x30 cm	Ø50 mm	1000 m
ML11301013	black/black	30 mic	1,0 m	1 hole	20 cm	Ø65 mm	1000 m
ML11301211	black/black	30 mic	1,2 m	1 hole	20 cm	Ø50 mm	1000 m
ML11301212	black/black	30 mic	1,2 m	2 holes	30x30 cm	Ø50 mm	1000 m
ML11301213	black/black	30 mic	1,2 m	1 hole	20 cm	Ø65 mm	1000 m
ML11301214	black/black	30 mic	1,2 m	2 holes	30x30 cm	Ø65 mm	1000 m
ML11401011	black/black	40 mic	1,0 m	1 hole	20 cm	Ø50 mm	1000 m
ML11401013	black/black	40 mic	1,0 m	1 hole	20 cm	Ø65 mm	1000 m
ML11401113	black/black	40 mic	1,1 m	1 hole	20 cm	Ø65 mm	1000 m
ML11401212	black/black	40 mic	1,2 m	2 holes	30x30 cm	Ø50 mm	1000 m
ML11401214	black/black	40 mic	1,2 m	2 holes	30x30 cm	Ø65 mm	1000 m
ML18301011	silver/black	30 mic	1,0 m	1 hole	20 cm	Ø50 mm	1000 m
ML18301212	silver/black	30 mic	1,2 m	2 holes	30x30 cm	Ø50 mm	1000 m
ML18301214	silver/black	30 mic	1,2 m	2 holes	30x30 cm	Ø65 mm	1000 m
ML18401414	silver/black	40 mic	1,4 m	2 holes	30x30 cm	Ø65 mm	1000 m



# Mulch films

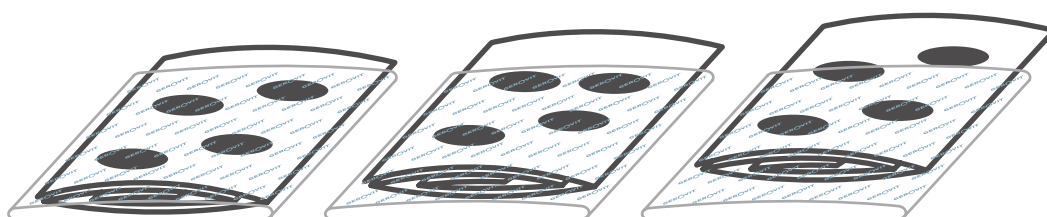
## - Product range



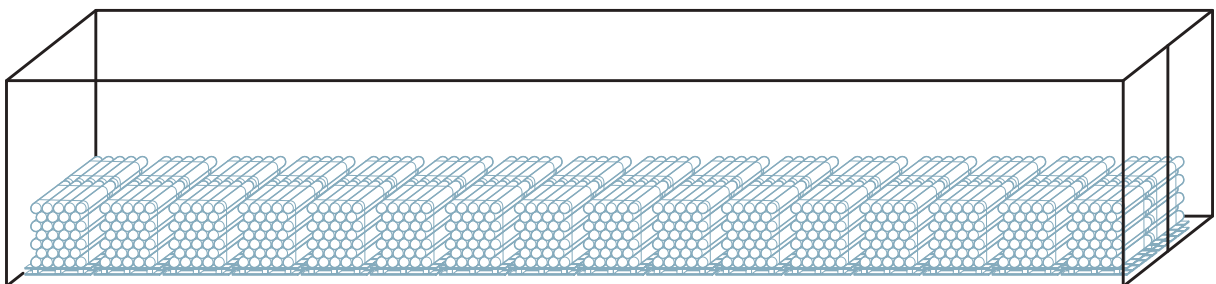
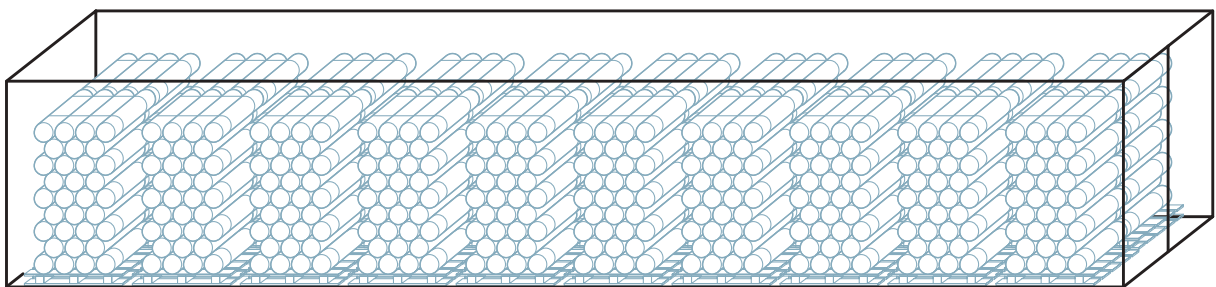
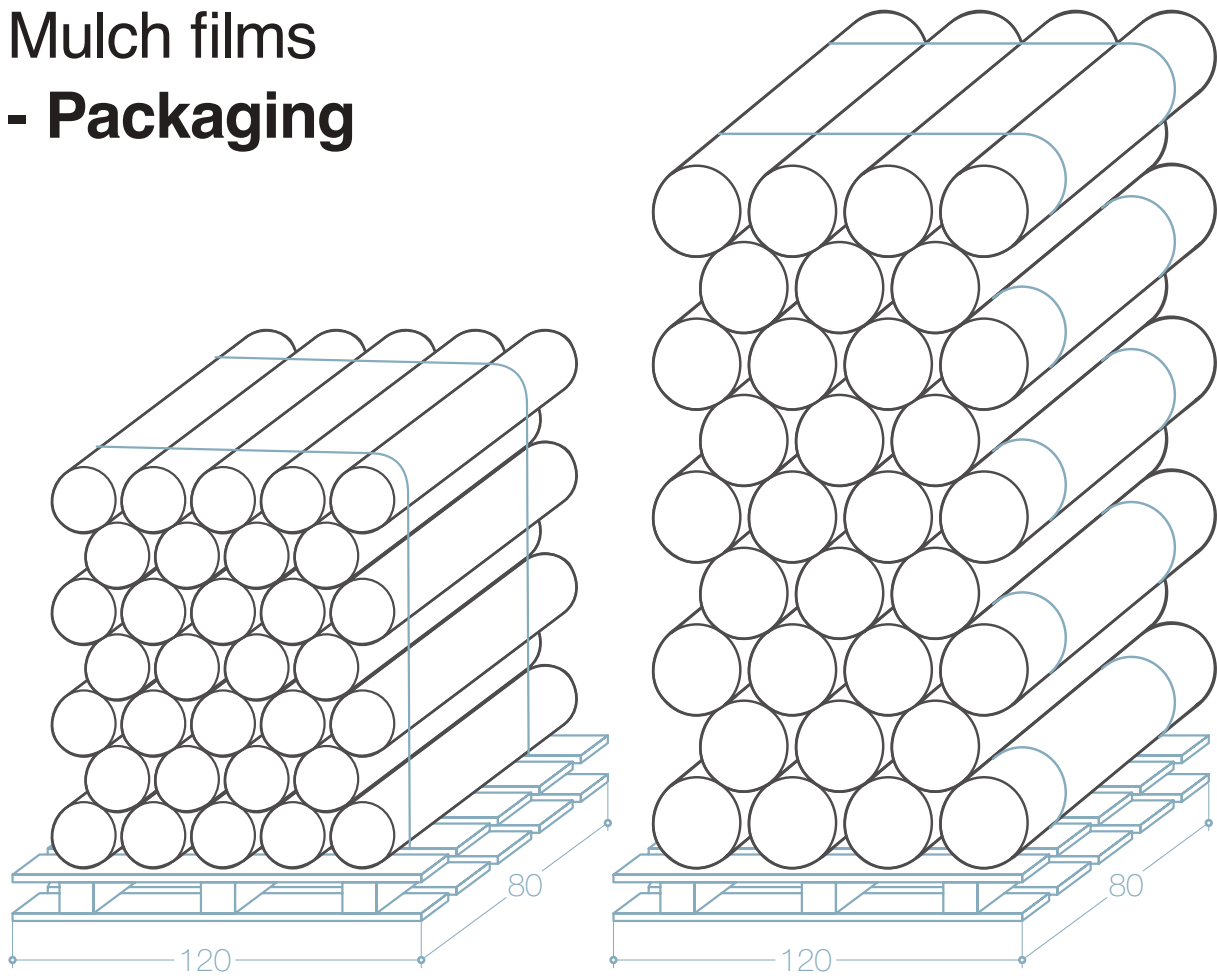
<div>  <b>Seasonal green salad mulch film black/black</b> </div>							
Code	Color	Thickness	Width	Hole size	Hole no.	Hole position	Spool
ML38152005	black/black	15 mic	2,0 m	Ø50 mm	8 holes	25x25 cm	500 m
ML38152010	black/black	15 mic	2,0 m	Ø50 mm	8 holes	25x25 cm	1000 m
ML38222010	black/black	22 mic	2,0 m	Ø50 mm	8 holes	25x25 cm	1000 m
ML38302010	black/black	30 mic	2,0 m	Ø50 mm	8 holes	25x25 cm	1000 m
ML30152505	black/black	15 mic	2,5 m	Ø50 mm	10 holes	25x25 cm	500 m
ML30152510	black/black	15 mic	2,5 m	Ø50 mm	10 holes	25x25 cm	1000 m
ML30222510	black/black	22 mic	2,5 m	Ø50 mm	10 holes	25x25 cm	1000 m
ML30302510	black/black	30 mic	2,5 m	Ø50 mm	10 holes	25x25 cm	1000 m
ML30153005	black/black	15 mic	3,0 m	Ø50 mm	10 holes	30x30 cm	500 m
ML30153010	black/black	15 mic	3,0 m	Ø50 mm	10 holes	30x30 cm	1000 m
ML30223010	black/black	22 mic	3,0 m	Ø50 mm	10 holes	30x30 cm	1000 m
ML30303010	black/black	30 mic	3,0 m	Ø50 mm	10 holes	30x30 cm	1000 m
<div>  <b>Seasonal green salad mulch film white/black</b> </div>							
ML32222005	white/black	22 mic	2,0 m	Ø50 mm	8 holes	25x25 cm	500 m
ML32222010	white/black	22 mic	2,0 m	Ø50 mm	8 holes	25x25 cm	1000 m
ML32222505	white/black	25 mic	2,5 m	Ø50 mm	10 holes	25x25 cm	500 m
ML32222510	white/black	25 mic	2,5 m	Ø50 mm	10 holes	25x25 cm	1000 m



<div>  <b>BAG PACKAGES - Seasonal green salad mulch film black/black</b> </div>							
Code	Color	Thickness	Width	Hole size	Hole no.	Hole position	Spool
MF38152000	black/black	15 mic	2,0 m	Ø50 mm	8 holes	25x25 cm	50 m
MF38222000	black/black	22 mic	2,0 m	Ø50 mm	8 holes	25x25 cm	50 m
MF38302000	black/black	30 mic	2,0 m	Ø50 mm	8 holes	25x25 cm	50 m
MF30152500	black/black	15 mic	2,5 m	Ø50 mm	10 holes	25x25 cm	50 m
MF30222500	black/black	22 mic	2,5 m	Ø50 mm	10 holes	25x25 cm	50 m
MF30302500	black/black	30 mic	2,5 m	Ø50 mm	10 holes	25x25 cm	50 m
MF30153000	black/black	15 mic	3,0 m	Ø50 mm	10 holes	30x30 cm	50 m
MF30223000	black/black	22 mic	3,0 m	Ø50 mm	10 holes	30x30 cm	50 m
MF30303000	black/black	30 mic	3,0 m	Ø50 mm	10 holes	30x30 cm	50 m
<div>  <b>BAG PACKAGES - Seasonal green salad mulch film white/black</b> </div>							
MF32222000	white/black	22 mic	2,0 m	Ø50 mm	8 holes	25x25 cm	50 m
MF32222500	white/black	25 mic	2,5 m	Ø50 mm	10 holes	25x25 cm	50 m



## Mulch films - Packaging







GEROVIT d.o.o.  
Krčevački put 123,  
34304 Banja Arandjelovac, Serbia

+381 62 80 51 300  
[info@gerovit.com](mailto:info@gerovit.com)  
[www.gerovit.com](http://www.gerovit.com)

Creating a competitive advantage in  
our customers' businesses with the  
help of first-class products.

We provide our company's success  
by consistently meeting the needs of  
clients, stakeholders and employees.